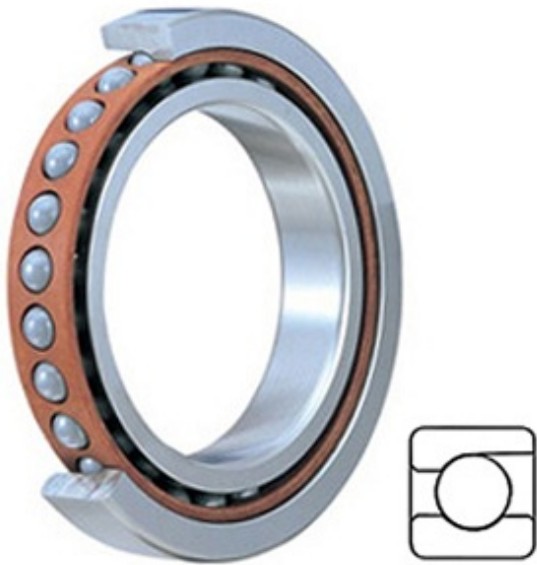




Consolated Bearing CO.,LTD



B/SEB1907CE3UM Bearing 2D drawings and 3D CAD models

7.48 Inch | 190 Millimeter x 10.236 Inch | 260 Millimeter x 1.299 Inch | 33 Millimeter SKF B/SEB1907CE3UM Precision Ball Bearings

Bearing No. B/SEB1907CE3UM

Category	Precision Ball Bearings
Inventory	0.0
Manufacturer Name	SKF
Minimum Buy Quantity	N/A
Weight	0
Product Group	B04270
Enclosure	Open
Precision Class	ABEC 7 ISO P4
Material - Ball	Steel
Number of Bearings	1 (Single)
Contact Angle	25 Degree
Preload	Medium
Raceway Style	1 Rib Outer Ring
Cage Material	Phenolic
Rolling Element	Ball Bearing
Mounting Arrangement	Universal
Flush Ground	Yes
Inch - Metric	Metric
Other Features	Single Row Angular Contact
Long Description	190MM Bore; 260MM Outside Diameter; 33MM Width; Open Enclosure; ABEC 7 ISO P4 Precision; Steel Ball Material; 1 (Single) Bearing; 25 Degree Contact Angle; Phenolic



Consolated Bearing CO.,LTD

	Cage Material; 1 Rib Outer Ring Ra
Category	Precision Ball Bearings
UNSPSC	31171531
Harmonized Tariff Code	8482.10.50.28
Noun	Bearing
Keyword String	Ball Angular Contact
Manufacturer URL	http://www.skf.com
D	10.236 Inch 260 Millimeter
d	7.48 Inch 190 Millimeter
B	1.299 Inch 33 Millimeter