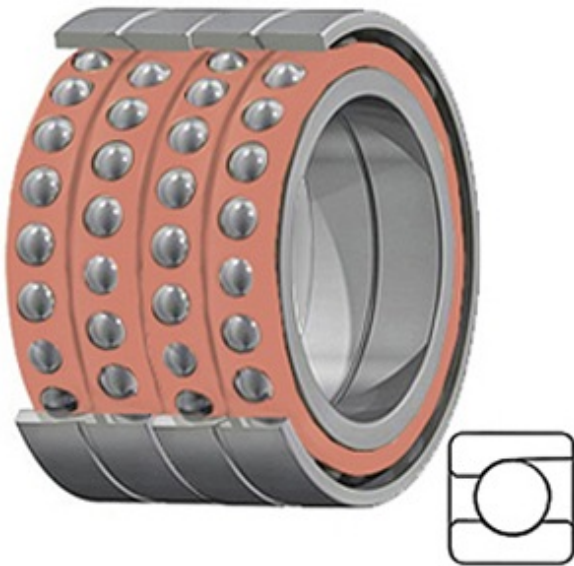




# Consolated Bearing CO.,LTD



3MM9115WI QUH Bearing 2D drawings and 3D CAD models

2.953 Inch | 75 Millimeter x 4.528 Inch | 115 Millimeter x 3.15 Inch | 80 Millimeter TIMKEN 3MM9115WI QUH Precision Ball Bearings

Bearing No. 3MM9115WI QUH

Category	Precision Ball Bearings
Inventory	0.0
Manufacturer Name	TIMKEN
Minimum Buy Quantity	N/A
Weight	5.117
EAN	0087796337367
Product Group	B04270
Enclosure	Open
Precision Class	ABEC 7   ISO P4
Material - Ball	Steel
Number of Bearings	4 (1 Quadruplex Set)
Contact Angle	25 Degree
Preload	Heavy
Raceway Style	1 Rib Outer Ring
Cage Material	Phenolic
Rolling Element	Ball Bearing
Mounting Arrangement	Quadruplex-Universal
Flush Ground	Yes
Inch - Metric	Metric
Other Features	Single Row   Angular Contact   Super High Precision
Long Description	75MM Bore; 115MM Outside Diameter; 80MM Width; Open Enclosure; ABEC 7   ISO P4 Precision;



## Consolated Bearing CO.,LTD

	Steel Ball Material; 4 (1 Quadruplex Set) Bearings; 25 Degree Contact Angle; Phenolic Cage Material; 1 Rib Out
Category	Precision Ball Bearings
UNSPSC	31171531
Harmonized Tariff Code	8482.10.50.28
Noun	Bearing
Keyword String	Angular Contact Ball
Manufacturer URL	<a href="http://www.timken.com">http://www.timken.com</a>
Manufacturer Item Number	3MM9115WI QUH
Weight / LBS	11.28
d	2.953 Inch   75 Millimeter
B	3.15 Inch   80 Millimeter
D	4.528 Inch   115 Millimeter