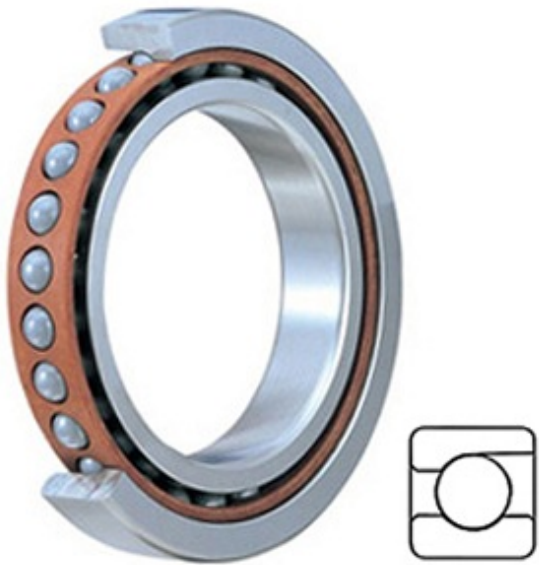




Consolated Bearing CO.,LTD



2MM214WI Bearing 2D drawings and 3D CAD models

2.756 Inch | 70 Millimeter x 4.921 Inch | 125
Millimeter x 0.945 Inch | 24 Millimeter TIMKEN
2MM214WI Precision Ball Bearings

Bearing No. 2MM214WI

Category	Precision Ball Bearings
Inventory	0.0
Manufacturer Name	TIMKEN
Minimum Buy Quantity	N/A
Weight	1.14
EAN	0087796070820
Product Group	B04270
Enclosure	Open
Precision Class	ABEC 7 ISO P4
Material - Ball	Steel
Number of Bearings	1 (Single)
Contact Angle	15 Degree
Preload	None
Raceway Style	1 Rib Outer Ring
Cage Material	Phenolic
Rolling Element	Ball Bearing
Flush Ground	No
Inch - Metric	Metric
Other Features	Single Row Angular Contact Super High Precision
Long Description	70MM Bore; 125MM Outside Diameter; 24MM Width; Open Enclosure; ABEC 7 ISO P4 Precision; Steel Ball Material; 1 (Single) Bearings; 15 Degree



Consolated Bearing CO.,LTD

	Contact Angle; Phenolic Cage Material; 1 Rib Outer Ring Ra
Category	Precision Ball Bearings
UNSPSC	31171531
Harmonized Tariff Code	8482.10.50.28
Noun	Bearing
Keyword String	Angular Contact Ball
Manufacturer URL	http://www.timken.com
Manufacturer Item Number	2MM214W1
Weight / LBS	2.51
B	0.945 Inch 24 Millimeter
D	4.921 Inch 125 Millimeter
d	2.756 Inch 70 Millimeter